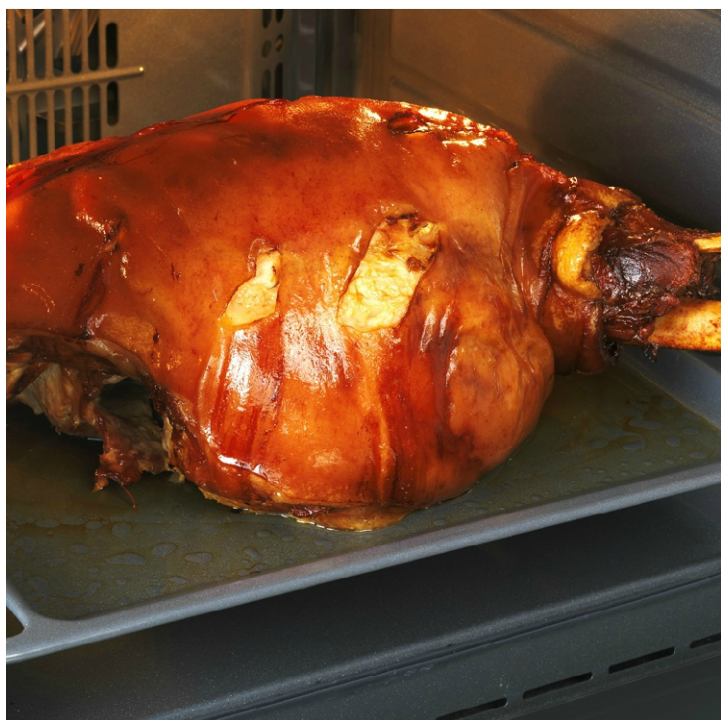




DD2 540 BL

Dimensions: H 887 x W 597 x D 577 (mm)
Colour: Inox



TECHNICAL SPECIFICATIONS

Model	DD2 540 BL
Colour	Inox
KEY INFORMATION	
Colour	Inox
Number Of Cavities	2
Timer	Digital Timer Easy to use
Cleaning system	Manual
Door glass	Double Glazed
Largest hob surface (cm)	1530
Cable Length (m)	0.0
Door type	Glass
Thermostat indicator	Y
Grill	2660
Smoke chimney	Vented Behind Hob
Preheating type	Normal
Forced air	0.99
Net Weight (Kg)	47.7
Gross Weight (Kg)	53.0
Dimensions (mm) Height/Width/Minimum Installed Depth	887x597x577
Package Dimensions (mm) Height/Width/Depth	960x670x710
Built in or Freestanding	Built In
MAIN CAVITY	
Net capacity (l)	74
Type	Fan
Heat Source	Elettrico
Time to cook standard load	50
Position	Bottom
SECOND CAVITY	
Net capacity (l)	42
Type	Static
Secondary Oven	Elettrico
Position	Sky
ENERGY/PERFORMANCE INFORMATION	
Energy efficiency class	A
Energy efficiency class Secondary Oven	A
Energy consumption Forced air convection (kWh)	0.99
Grill power (W)	2660
EQUIPMENT	
Main oven accessories	3 Grids,Kit Grill Pan
Second oven accessories	1 Grid,Kit Grill Pan
Lighting	Normal
ELECTRICAL	
Supply Voltage	230-240
Supply Frequency	50/60
Absorbed Power (W)	4400
Absorbed Current (A)	20

